

# Washbot<sup>®</sup>

## Smart Toilets





# Say hello to Washbot, the smarter toilet

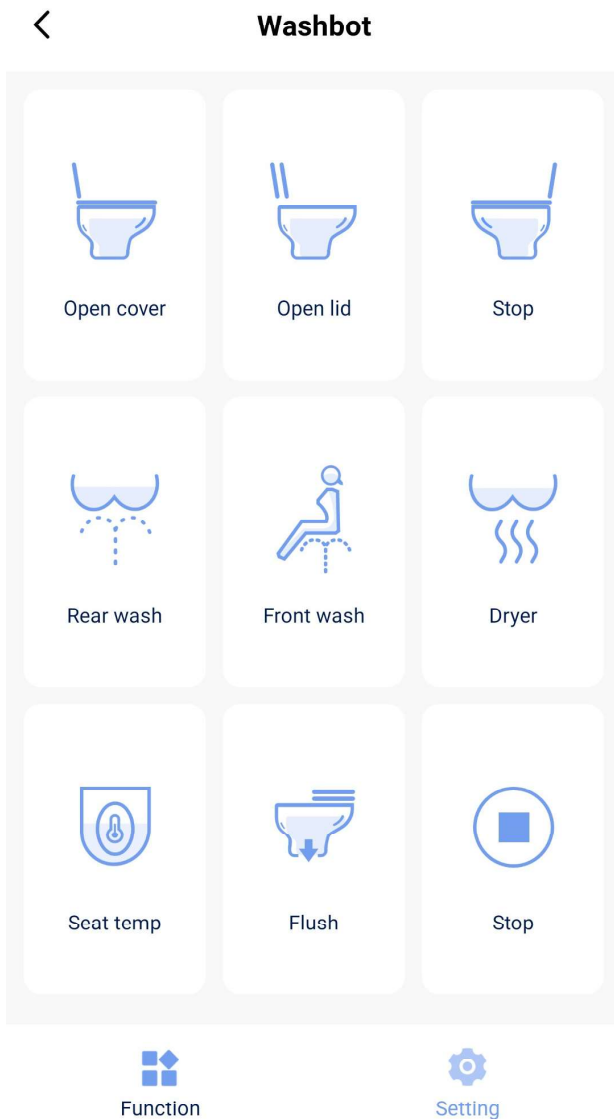
Today we live in a Smart world. A world of interconnected technology, of Smart Phones and Smart Televisions. According to the Oxford English Dictionary, amongst the definitions of Smart are;

- clean, neat, and looking new and attractive
- intelligent
- computer-controlled
- fashionable

Here at Washbot, we are pretty sure we have these covered. Read on to find out more...



# Technology



There can be no doubt that the future of the home is smart, and at Washbot we are proudly bringing tech into the bathroom.

In addition to the washing and drying functions, the nightlight is a must for many households, particularly those with children. The heated seat will be a revelation in the downstairs toilet, and the automated seat provides a genuine hands-free experience!

Our app enables full control of all functions of your Washbot to bring the power of technology right to your fingertips.

# Sustainability



Over 700 million trees a year are cut down to turn into 42 million tonnes of toilet paper\*. Whilst paper is one of the most recycled materials in Europe, tissue paper is typically a single use product.

The manufacture of toilet paper uses over a billion tonnes of water per year\*, an average of 37 gallons per roll\*\*.

Every few months we hear of a new 'fatberg' clogging up our sewage systems.

Using a Washbot will help you contribute to the environment by greatly reducing the amount of toilet paper that is thrown away every day. Rest assured, Washbot's energy consumption and the additional water usage are both very low\*\*\*.

\*Source: <https://www.theworldcounts.com/challenges/consumption/other-products/environmental-impact-of-toilet-paper>

\*\*<https://www.newsweek.com/amplify/heres-what-roll-toilet-paper-does-environment-finding-best-eco-friendly-alternative>

\*\*\*Energy consumption on standby mode is 1W. Water usage for automated washing cycle is 500ml on lowest setting.



# Wellness

It has been said the average person spends over a year of their life on the toilet. The Washbot brings Spa elements to this most private room of your home.



Repeated use of toilet paper can cause discomfort, particularly for those with afflictions such as haemorrhoids. Gentle cleansing with water is hygienic, leaving the user refreshed and revitalised.

The Washbot has an adjustable nozzle offering differing angles of spray, together with a variety of pressure and temperature settings to provide the ultimate in comfort. Even more, the heated seat keeps you warm on those cold winter mornings.

# Functions and features



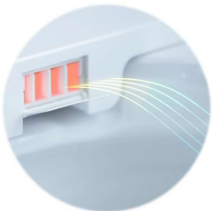
## **Rear Wash**

- adjustable temperature settings
- adjustable pressure settings
- adjustable angle of spray
- constant or oscillating spray



## **Front Wash**

- ergonomically suited for the female anatomy
- adjustable temperature settings
- adjustable pressure settings
- adjustable angle of spray
- constant or oscillating spray



## **Drying**

- reduce toilet paper usage with the Washbot warm air drying
- adjustable temperature settings



## **Heated seat**

- four adjustable temperature settings

Note: not all functions are available on all models. Please check individual model for details.



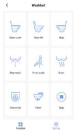
### **Automatic opening**

- lid and seat
- controlled by sensor / remote / app



### **Night Light**

- for ease of use at night



### **APP**

- bluetooth connected App enabling full control of functions
- iOS or Android



### **Remote control**

- supplied with wall mounting



### **Soft Close**

- soft closing seat and lid  
(for non-automatic opening models)

Note: not all functions are available on all models. Please check individual model for details.



# Our product range



# WB8001 Natori

**Wall-hung rimless design. Elegant classic styling meets smart toilet functionality.**



## Functions

- Rear Wash
- Front Wash
- Oscillating wash
- Adjustable Water Temperature
- Adjustable Water Pressure
- Adjustable Spray Angle
- Child auto wash
- Adult Auto Wash
- Warm Air Drying
- Heated Seat
- Nightlight
- Soft close seat
- Self-cleaning nozzle
- Descaling function
- Bluetooth
- APP
- Remote Control
- User Detection
- Mute mode

## Technical

- Wall Hung
- Rimless ceramic bowl
- AB Air-gap back-flow prevention
- 220-240V
- IPX4 water proof
- Electrical cord with IP67 rated connection
- Max working Power 1350W
- Cistern not included

## Approvals

- KUKReg4
- WRAS
- UKCA, CE



# WB8001A Natori

***Wall-hung rimless design, with automatic opening. Elegant classic styling meets smart toilet functionality.***



## Functions

- Rear Wash
- Front Wash
- Oscillating wash
- Adjustable Water Temperature
- Adjustable Water Pressure
- Adjustable Spray Angle
- Child auto wash
- Adult Auto Wash
- Warm Air Drying
- Heated Seat
- Nightlight
- Sensor activated automated opening
- Self-cleaning nozzle
- Descaling function
- Bluetooth
- APP
- Remote Control
- User Detection
- Mute mode

## Technical

- Wall Hung
- Rimless ceramic bowl
- AB Air-gap back-flow prevention
- 220-240V
- IPX4 water proof
- Electrical cord with IP67 rated connection
- Max working Power 1350W
- Cistern not included

## Approvals

- KUKReg4
- WRAS
- UKCA, CE



# WB8002 Nagara

**Wall-hung rimless design. Sleek modern styling combined with smart toilet functionality.**



## Functions

- Rear Wash
- Front Wash
- Oscillating wash
- Adjustable Water Temperature
- Adjustable Water Pressure
- Adjustable Spray Angle
- Child auto wash
- Adult Auto Wash
- Warm Air Drying
- Heated Seat
- Nightlight
- Soft close seat
- Self-cleaning nozzle
- Descaling function
- Bluetooth
- APP
- Remote Control
- User Detection
- Mute mode

## Technical

- Wall Hung
- Rimless ceramic bowl
- AB Air-gap back-flow prevention
- 220-240V
- IPX4 water proof
- Electrical cord with IP67 rated connection
- Max working Power 1350W
- Cistern not included

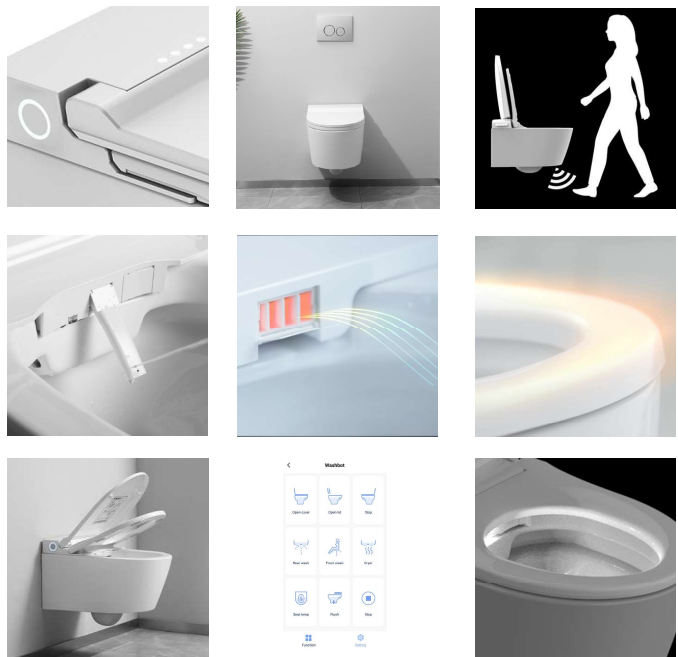
## Approvals

- KUKReg4
- WRAS
- UKCA, CE



# WB8002A Nagara

***Wall-hung rimless design, with automatic opening. Sleek modern styling combined with smart toilet functionality.***



## Functions

- Rear Wash
- Front Wash
- Oscillating wash
- Adjustable Water Temperature
- Adjustable Water Pressure
- Adjustable Spray Angle
- Child auto wash
- Adult Auto Wash
- Warm Air Drying
- Heated Seat
- Nightlight
- Sensor activated automated opening
- Self-cleaning nozzle
- Descaling function
- Bluetooth
- APP
- Remote Control
- User Detection
- Mute mode

## Technical

- Wall Hung
- Rimless ceramic bowl
- AB Air-gap back-flow prevention
- 220-240V
- IPX4 water proof
- Electrical cord with IP67 rated connection
- Max working Power 1350W
- Cistern not included

## Approvals

- KUKReg4
- WRAS
- UKCA, CE



# WB9001 Agano

***Back to wall, semi-rimless design. Elegant classic styling combined with smart toilet functionality.***



## Functions

- Rear Wash
- Front Wash
- Oscillating wash
- Adjustable Water Temperature
- Adjustable Water Pressure
- Adjustable Spray Angle
- Child auto wash
- Adult Auto Wash
- Warm Air Drying
- Heated Seat
- Nightlight
- Soft-close seat
- Self-cleaning nozzle
- Descaling function
- Bluetooth
- APP
- Remote Control
- User Detection
- Mute mode

## Technical

- Back to Wall
- Semi-rimless ceramic bowl
- AB Air-gap back-flow prevention
- 220-240V
- IPX4 water proof
- Electrical cord with IP67 rated connection
- Max working Power 1350W
- Cistern not included

## Approvals

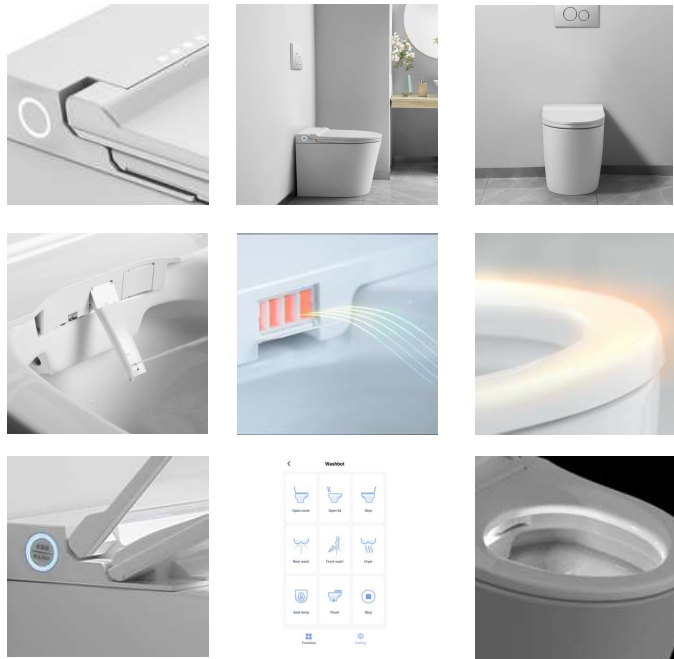
- KUKReg4
- UKCA, CE





# WB9002 Ishikari

***Back to wall semi-rimless design. Sleek modern styling combined with smart toilet functionality.***



## Functions

- Rear Wash
- Front Wash
- Oscillating wash
- Adjustable Water Temperature
- Adjustable Water Pressure
- Adjustable Spray Angle
- Child auto wash
- Adult Auto Wash
- Warm Air Drying
- Heated Seat
- Nightlight
- Soft-close seat
- Self-cleaning nozzle
- Descaling function
- Bluetooth
- APP
- Remote Control
- User Detection
- Mute mode

## Technical

- Back to Wall
- Semi-rimless ceramic bowl
- AB Air-gap back-flow prevention
- 220-240V
- IPX4 water proof
- Electrical cord with IP67 rated connection
- Max working Power 1350W
- Cistern not included

## Approvals

- KUKReg4
- UKCA, CE



# Overview

Function	NATORI WB8001	NATORI WB8001A	NAGARA WB8002	NAGARA WB8002A	AGANO WB9001	ISHIKARI WB9002
Rear Wash	✓	✓	✓	✓	✓	✓
Front Wash	✓	✓	✓	✓	✓	✓
Oscillating wash	✓	✓	✓	✓	✓	✓
Adjustable Water Temperature	✓	✓	✓	✓	✓	✓
Adjustable Water Pressure	✓	✓	✓	✓	✓	✓
Adjustable Nozzle Angle	✓	✓	✓	✓	✓	✓
Child wash	✓	✓	✓	✓	✓	✓
Adult Auto Wash	x	x	✓	✓	x	x
Drying	✓	✓	✓	✓	✓	✓
Heated Seat	✓	✓	✓	✓	✓	✓
Nightlight	✓	✓	✓	✓	✓	✓
Automatic opening	x	✓	x	✓	x	x
Bluetooth	✓	✓	✓	✓	✓	✓
Soft close seat	✓	✓	✓	✓	✓	✓
Self-cleaning nozzle	✓	✓	✓	✓	✓	✓
Remote Control	✓	✓	✓	✓	✓	✓
App	✓	✓	✓	✓	✓	✓
User Detection	✓	✓	✓	✓	✓	✓
Mute mode	✓	✓	✓	✓	✓	✓
Back-flow prevention	AB air-gap	AB air-gap	AB air-gap	AB air-gap	AB air-gap	AB air-gap
Certification	WRAS, KUKreg4 UKCA, CE	WRAS, KUKreg4 UKCA, CE	WRAS, KUKreg4 UKCA, CE	WRAS, KUKreg4 UKCA, CE	KUKreg4 UKCA, CE	KUKreg4 UKCA, CE
Type	Wall hung	Wall hung	Wall hung	Wall hung	Back to wall	Back to wall
Electrical power (voltage)	220-240V	220-240V	220-240V	220-240V	220-240V	220-240V
IP67 rated electrical cord & connector	✓	✓	✓	✓	✓	✓
Water connection pressure	0.08~0.75 mpa	0.08~0.75 mpa	0.08~0.75 mpa	0.08~0.75 mpa	0.08~0.75 mpa	0.08~0.75 mpa
Max working Power	1350W	1350W	1350W	1350W	1350W	1350W
Standby Power - eco mode	0W	0W	0W	0W	0W	0W
Standby Power - max seat temp	40W	40W	40W	40W	40W	40W

# Installation

## Water

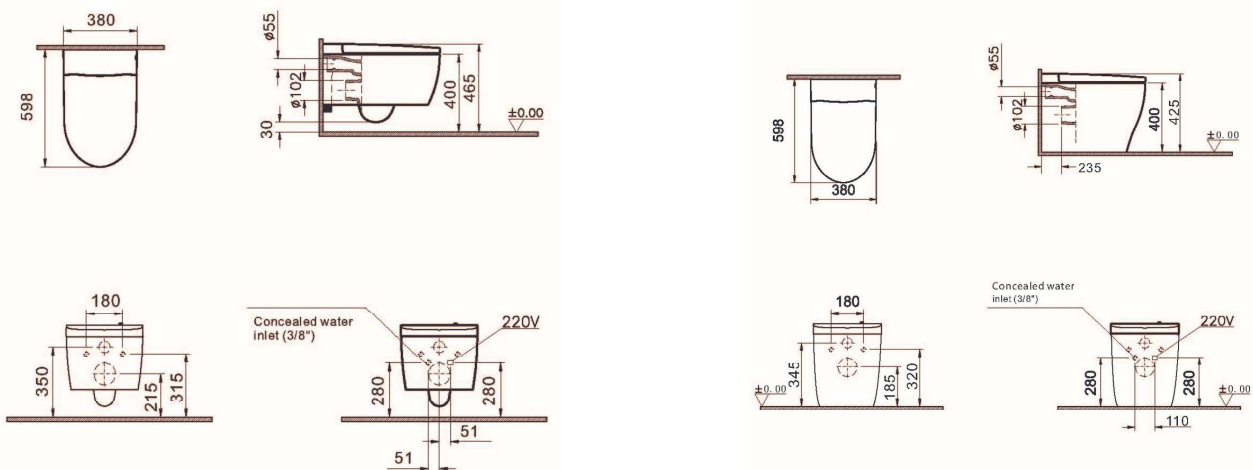
The Washbot must be connected to mains water (0.08-0.75mpa inlet pressure). Our wall hung and back to wall models do not include a cistern. We recommend installing with a concealed cistern. We supply with both 3/8" and 1/2" fittings.

## Electrics

An electrical connection is required. Washbot units are IPX4 rated and can be installed in Zone 2 of the IET wiring regulations (BS7671). The electrical cord supplied with the unit is IP67 rated.

## Dimensions

Please refer to the drawings below for dimensions;



Wall Hung

Back to wall

# Quality & warranty

We are proud of our product quality. All Washbots are subject to rigorous testing during product development and manufacture.

We provide a two year warranty from date of installation.



All units have been tested by SGS to conform to both CE, and the new UKCA standards

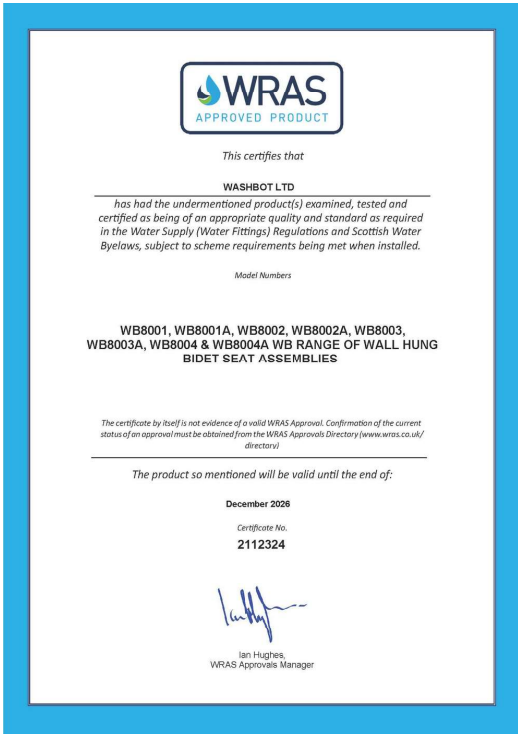


Wall hung and back to wall units conform to KIWA Watertec KUKreg4



Wall hung units conform to WRAS

# Certification



CERTIFICATE



Certificate number: 2111730 (1)

Issued 17/11/2021  
Expires 17/11/2026

### Kiwa Regulation 4 (KUKreg4) Certification

Evaluation Guideline – Kiwa UK – EG004 – Regulation 4(1)(a)  
Model number(s) – see Appendix

#### Washbot Ltd.

Kiwa Watertec declares that legitimate confidence exists in the products specified in this certificate and supplied by the above organisation be relied upon to comply with the Kiwa Evaluation Guideline referred above.

Which verifies the requirements of:

Regulation 4(1)(a) of the Water Supply (Water Fittings) Regulations 1999 England & Wales; 2009 Northern Ireland and 2016 byelaws Scotland.

This certificate has been issued in accordance with the Kiwa regulations for product certification.

Signed on behalf of Kiwa Watertec



David Jay, Business Unit Manager – Authorised Signatory  
Kiwa Watertec

Publication of this certificate is allowed.  
Products are intended to be used in the UK only. For other countries, other (national) requirements will apply.  
See <http://www.kiwa.com/en/about-us/kiwa-water-products/> to ensure that the certificate is still valid.

Kiwa Watertec  
Waterschap Overijssel  
29A Rijkswaardweg  
Elsvoorde  
6825  
1873 RD  
Utrecht  
T +31(0)30 200 1000  
www.kiwa.com  
[www.kiwa.com](http://www.kiwa.com)

Certificate Issued to:  
Washbot Ltd  
Northgate Business Centre  
38 Northgate  
Newark-on-Trent  
NG24 1EZ



Page 1 of 2



### VERIFICATION OF COMPLIANCE

No.: UKCA SHES22040061161S  
Applicant: Washbot Limited  
38-40 Northgate, Newark-on-Trent, Nottinghamshire, NG24 1EZ, United Kingdom  
Manufacturer: Refer to main report  
Product Name: Smart Toilet  
Product Description: Smart Toilet  
Model No.: WB8001, WB8001A, WB8002, WB8002A, WB8003, WB8003A, WB8004, WB8004A, WB8005, WB8005A, WB8006, WB8006A, WB8007, WB8007A, WB8008, WB8008A, WB8009, WB8009A, WB8001, WB8002, WB8003, WB8004, WB8005, WB8006, WB8007, WB8008, WB8009  
Trade Mark: **Washbot®**  
Rating: 220 V - 240 V, 50 Hz - 60 Hz, 1350 W  
Protection against Electric Shock: Class I  
Degree of Protection: IPX4  
Additional Information: -  
Sufficient samples of the product have been tested and found to be in conformity with  
Test Standard: EN 60335-2-84:2003 + A1:2008 + A2:2019  
EN 60335-1:2012 + A11:2014 + A13:2017 + A1:2019 + A14:2019 + A2:2019 + A15:2021  
EN 62233:2008  
as shown in the  
Test Report Number(s): SHES220400611601

This Verification of Compliance has been granted to the applicant based on the results of tests, performed by Laboratory of SGS-CSTC Standards Technical Services Co., Ltd. on sample of the above-mentioned product in accordance with the provisions of the relevant designated standards under UK Legislation – Electrical Equipment (Safety) Regulations 2016. The UKCA marking as shown below can be affixed, under the responsibility of the manufacturer, after completion of a UK Declaration of Conformity and compliance with all relevant UK Legislations.



2022-07-22

Copyright of this verification is owned by SGS-CSTC Standards Technical Services Co., Ltd. and may not be reproduced other than in full and with the prior approval of the General Manager. This verification is subjected to the governance of the General Conditions of Service which can be accessible at <http://www.sgs.com/en/terms-and-conditions>  
Member of SGS Group (Société Générale de Surveillance)



### VERIFICATION OF COMPLIANCE

No.: LVU SHES22040061161S  
Applicant: Washbot Limited  
38-40 Northgate, Newark-on-Trent, Nottinghamshire, NG24 1EZ, United Kingdom  
Manufacturer: Refer to main report  
Product Name: Smart Toilet  
Product Description: Smart Toilet  
Model No.: WB8001, WB8001A, WB8002, WB8002A, WB8003, WB8003A, WB8004, WB8004A, WB8005, WB8005A, WB8006, WB8006A, WB8007, WB8007A, WB8008, WB8008A, WB8009, WB8009A, WB8001, WB8002, WB8003, WB8004, WB8005, WB8006, WB8007, WB8008, WB8009  
Trade Mark: **Washbot®**  
Rating: 220 V - 240 V, 50 Hz - 60 Hz, 1350 W  
Protection against Electric Shock: Class I  
Degree of Protection: IPX4  
Additional Information: -  
Sufficient samples of the product have been tested and found to be in conformity with  
Test Standard: EN 60335-2-84:2003 + A1:2008 + A2:2019  
EN 60335-1:2012 + A11:2014 + A13:2017 + A1:2019 + A14:2019 + A2:2019 + A15:2021  
EN 62233:2008  
as shown in the  
Test Report Number(s): SHES220400611601

This Verification of Compliance has been granted to the applicant based on the results of tests, performed by Laboratory of SGS-CSTC Standards Technical Services Co., Ltd. on sample of the above-mentioned product in accordance with the provisions of the relevant harmonized standards under the Low Voltage Directive 2014/35/EU. The CE marking as shown below can be affixed, under the responsibility of the manufacturer, after completion of an EC Declaration of Conformity and compliance with all relevant EC Directives. The affixing of the CE marking presumes in addition that the conditions in annexes III and IV of the Directive are fulfilled.



2022-07-22

This verification is made in compliance with its General Conditions of Services accessible at <http://www.sgs.com/en/terms-and-conditions>. Attention is drawn to the limitations of liability defined therein and in the Test Report here above mentioned which findings are reflected in this verification. Any unauthorized alteration, forgery or falsification of the content or appearance of this document is unlawful and offenders may be prosecuted to the fullest extent of the law.  
Member of SGS Group (Société Générale de Surveillance)

Washbot<sup>®</sup>  
moxpop<sup>®</sup>

Washbot Limited  
38-40 Northgate, Newark-on Trent,  
Nottinghamshire. NG24 1EZ.  
England.  
Tel. +44 1636 314042  
Email. [info@thewashbot.co.uk](mailto:info@thewashbot.co.uk)  
[www.thewashbot.co.uk](http://www.thewashbot.co.uk)

